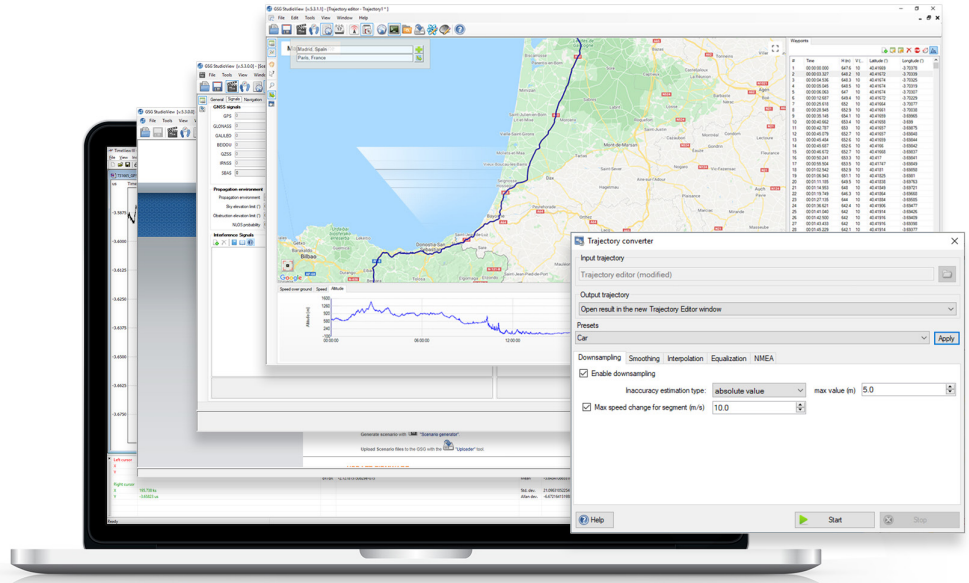


- Easy-to-use Windows® application for the GSG series multi-channel simulator
- Build and manage the most complex scenario parameters independent of the simulator
- Visually create trajectories using Google Maps or import from most other software applications and devices
- Upload / download scenario files (including events and trajectories) to and from the simulator
- Update firmware of the simulator



GSG StudioView™ offers an easy way to create, edit and backup complex scenarios for a Pendulum GSG series multi-channel GPS/GNSS simulator. Even though the ability to manage scenarios without the need of an external computer is an advantage of GSG simulators, StudioView Windows® software offers the following benefits for the test engineer:

- Simple creation, editing and organization of all scenario parameters including dynamic events
- Create, edit and visualize trajectories with mapping tools
- Convert trajectories from CSV, KML, KMZ and GPX files to the required NMEA format
- Create scenario files (including events and trajectories) without the need to be connected to a simulator

Easy Trajectory Building and Dynamic Event Management

A key feature of GSG StudioView is the ability to create and modify the simulation of a moving receiver. Easily create visual trajectories with Google Maps. Or import trajectories from most other software applications and devices such as Google Earth. The software converts a list of waypoints from a CSV file, or waypoints, routes and tracks from a GPX file (GPS exchange format) into NMEA as required by the unit. Google KML and KMZ files can be opened, edited, and saved. Each waypoint

can be specified. When converting a trajectory file to NMEA format, you specify altitude and speed at each waypoint or use a constant value for the trajectory. Trajectory waypoints can be interpolated at a set interval from 100 msec to 1 hour.

Download Ephemeris and Almanac Data

Based on the scenario start time and duration, GSG StudioView software identifies and pre-downloads the relevant RINEX files from official websites. Once the scenario is uploaded to the simulator, no further downloads are required.

Simple File Management and Control

When ready to upload (or download) the scenario files to any GSG unit, simply connect through the network, USB, or GPIB interfaces and use the built-in file manager. Drop and drag files, use predefined hotkeys for copy, delete or rename either on the PC side or the GPS simulator side. Or use the “uploader” to batch upload scenarios, or firmware files, to several units simultaneously.

Also included is “console” function to send SCPI commands to a connected unit, and view the response.

The software comes standard with multi-language support. English and Russian are currently supported. Contact us if other languages are desired.

Easy-to-Use Windows® Application

Intuitive Windows screens make StudioView very easy to use. See Figures 1-7.

Ordering Information

License key enables full functionality, one key required per machine (file transfer functionality is available without a key).

GSG-StudioView Licensing Options:

Site licenses are limited to one physical address. Enterprise licenses can be used anywhere in the organization.

- Single seat
- 5-seats (enterprise)
- 10-seats (site)
- 10-seats (enterprise)
- Unlimited (site)

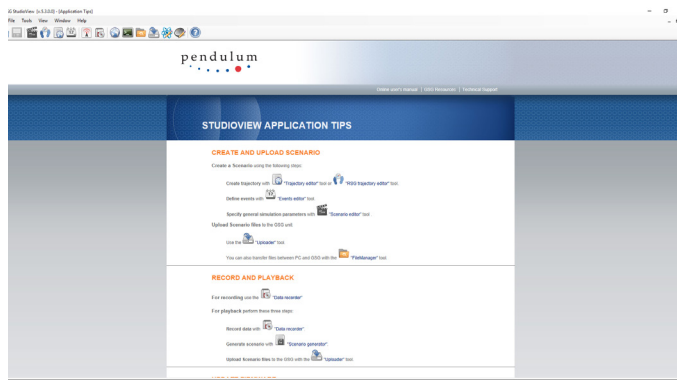


Figure 1: Start Menu

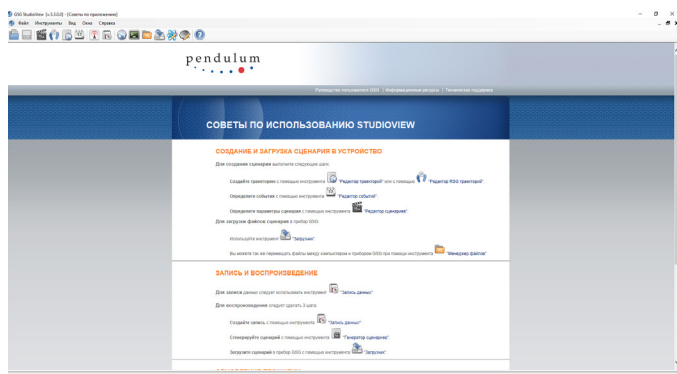


Figure 2: Russian Start Menu

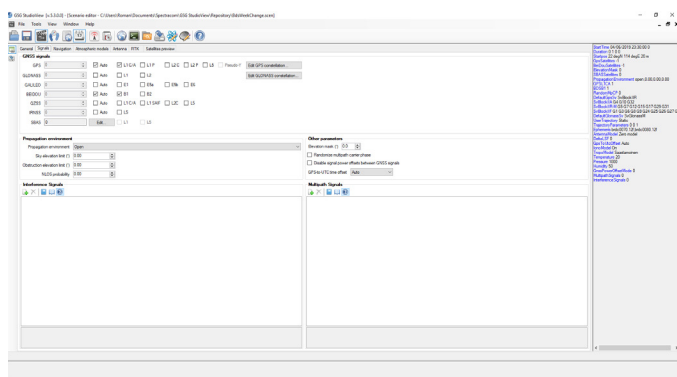


Figure 3: Scenario Parameter Editor

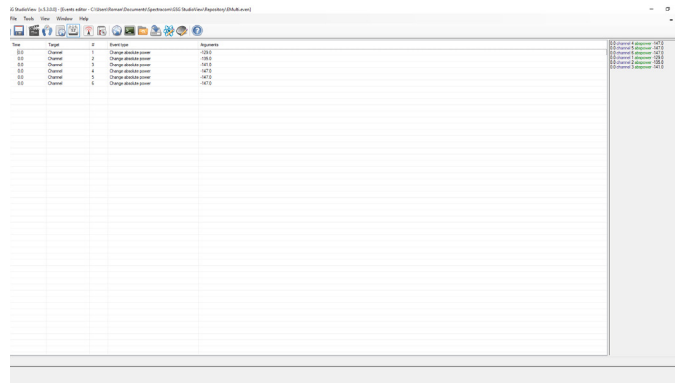


Figure 5: Event Parameters

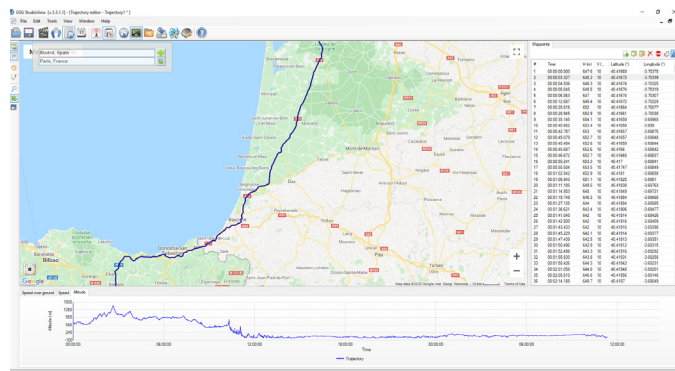


Figure 6: Trajectory Builder via Google Maps

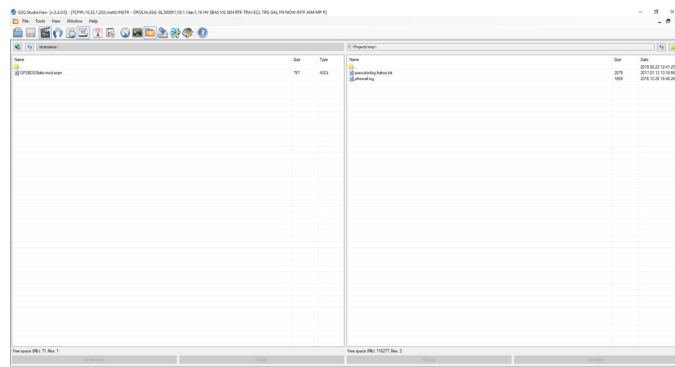


Figure 7: File Manager

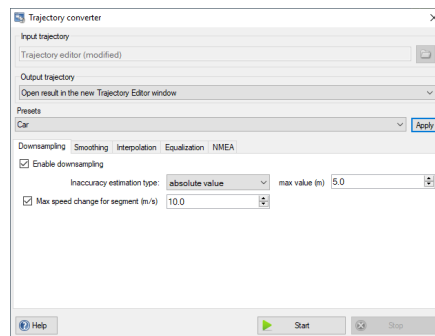


Figure 4: Trajectory Converter